



TRD HIGH FLOW AIR FILTER

Before you begin we recommend that you thoroughly clean the engine compartment. If you don't any dirt Build up in the engine compartment could become dislodged during the procedure and fall into the engine.

CAUTION Allow the car to cool and or wear appropriate protective clothing before attempting to access the engine bay.

Disconnect the battery before starting the procedure, but wait until 30 minutes has elapsed from the time that the key has been removed from the ignition switch.

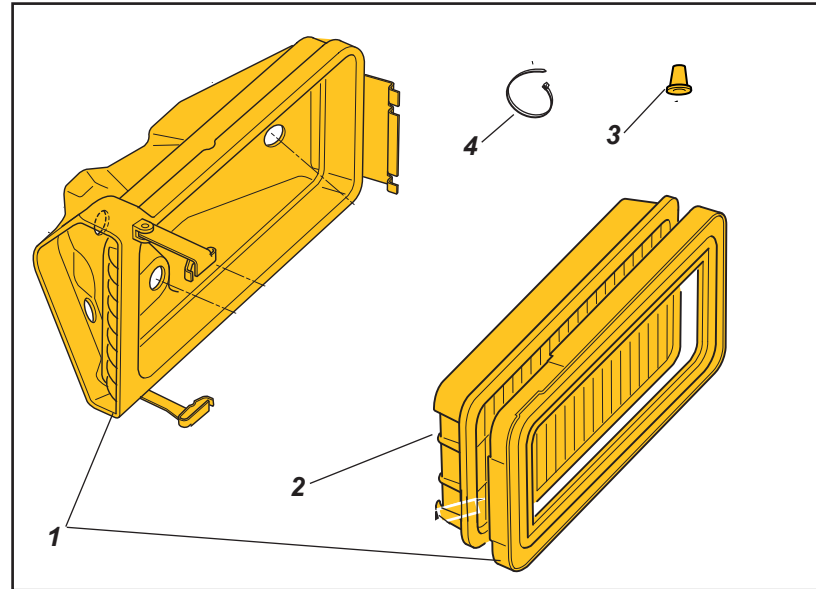
NOTICE Read these instructions thoroughly before commencing work and ensure all components are present. If in any doubt, consult a Lotus dealer before undertaking the work.

Disclaimer

Lotus accepts no liability for any direct, indirect or consequential damage or loss (including as a result of negligence) arising from the application of these fitting instructions by any person. For the avoidance of doubt, this does not affect your statutory rights and Lotus does not exclude liability (if any) to you for death or personal injury arising out of Lotus' negligence.

Please note that the fitting of any Lotus approved part(s) by anyone other than a Lotus approved engineer may invalidate the vehicle warranty.

Please note: Dependant on the market supplied, the Club Racer Power Pack may only be suitable for track use only.



Parts Required

Item	Qty	Description	Part Number
1	1	High flow air filter box/adaptor	A127E6002F
2	1	High flow air filter	A127E6003F
3	3	Blanking plugs	A120W6758F
4	1	Tie wrap	

Airbox Induction System (2ZZ shown)

Vehicle Preparation

1. Disconnect the harness connectors for the Mass Air Flow (MAF) sensor and Vacuum Solenoid Valve (VSV) located on the air filter lid*.

2. **2ZZ 1.8 litre engine:** Remove the 2 vacuum pipes, arrowed, connecting the inlet manifold to plastic 'T' piece and the VSV to the air filter base and discard.

***1ZR 1.6 litre engine:** The VSV valve is located on the inlet manifold. If the TRD airbox is being fitted on this application it unnecessary to disconnect the harness connector. Only disconnect and discard the pipe from the Intake Flap Valve Actuator to the VSV valve.

3. **2ZZ engine:** Blank the 3 ports that are now open with the supplied blanking plugs.

1ZR 1.6 litre engine: only blank the now unused port on the VSV valve.

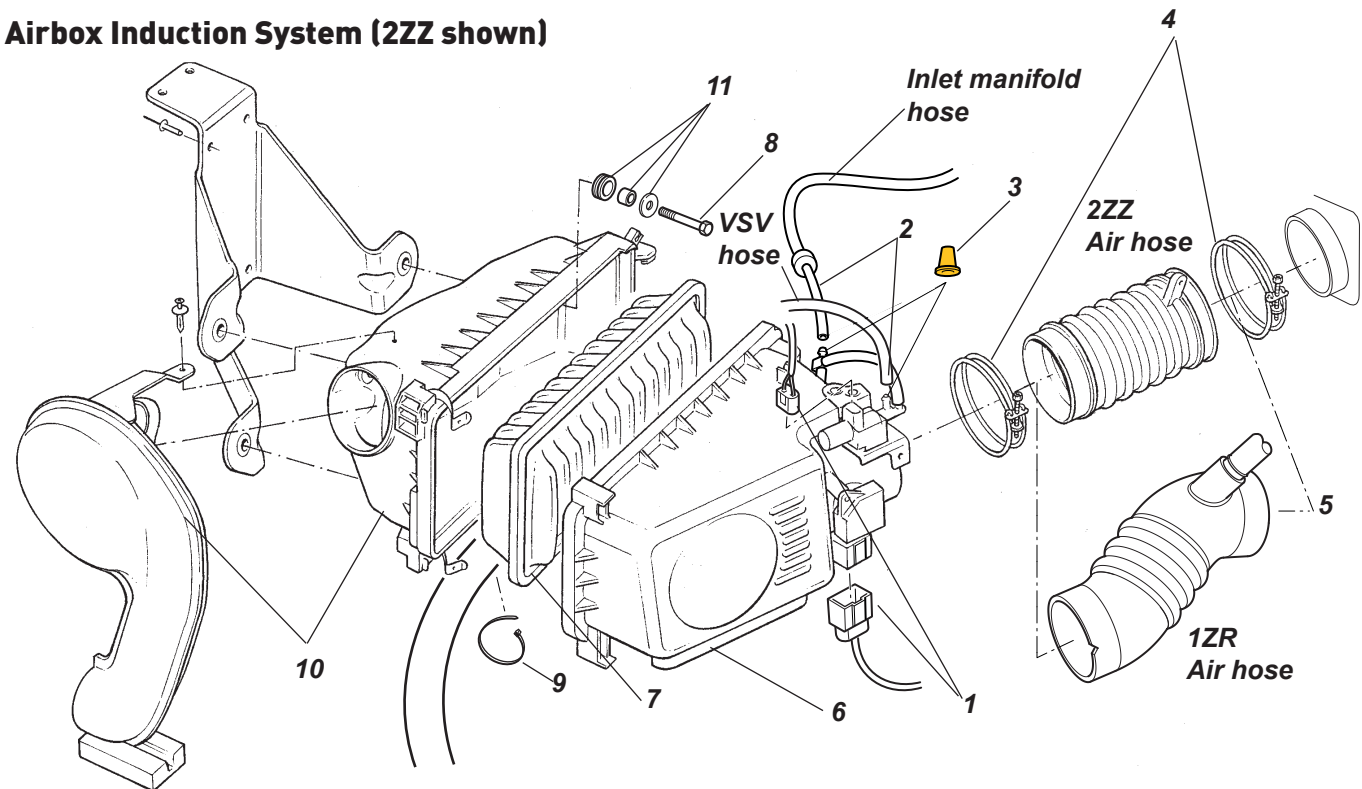
4. Loosen the 2 hose clips holding the zip-tube to the air filter lid and the throttle body.

5. Remove the zip-tube.

6. Unclip the air filter lid from the air filter base and remove from vehicle.

7. Remove the air filter element and discard.

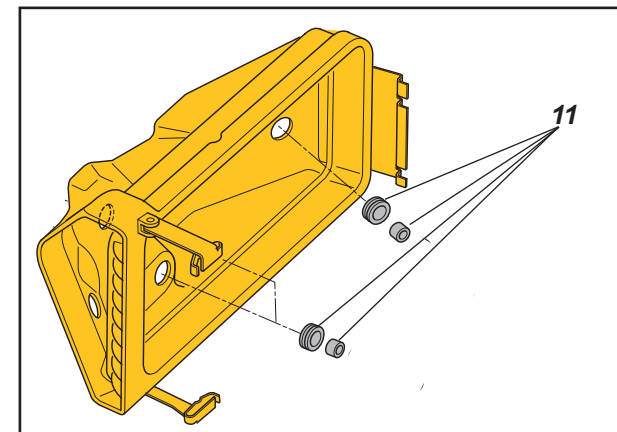
8. Undo the 3 M8 fixing bolts locating the air filter base to its mounting bracket. Retain these bolts and washers.



9. Cut the tie wrap holding the wiring loom to air filter base. Use a new tie wrap to secure the wiring loom to the nearest secure point.

10. Remove the air filter base and intake snorkel from the vehicle.

11. Remove the 3 mounting rubbers and steel inserts from the original air filter base. The original air filter base and snorkel will not be re-used.



Airbox Preparation

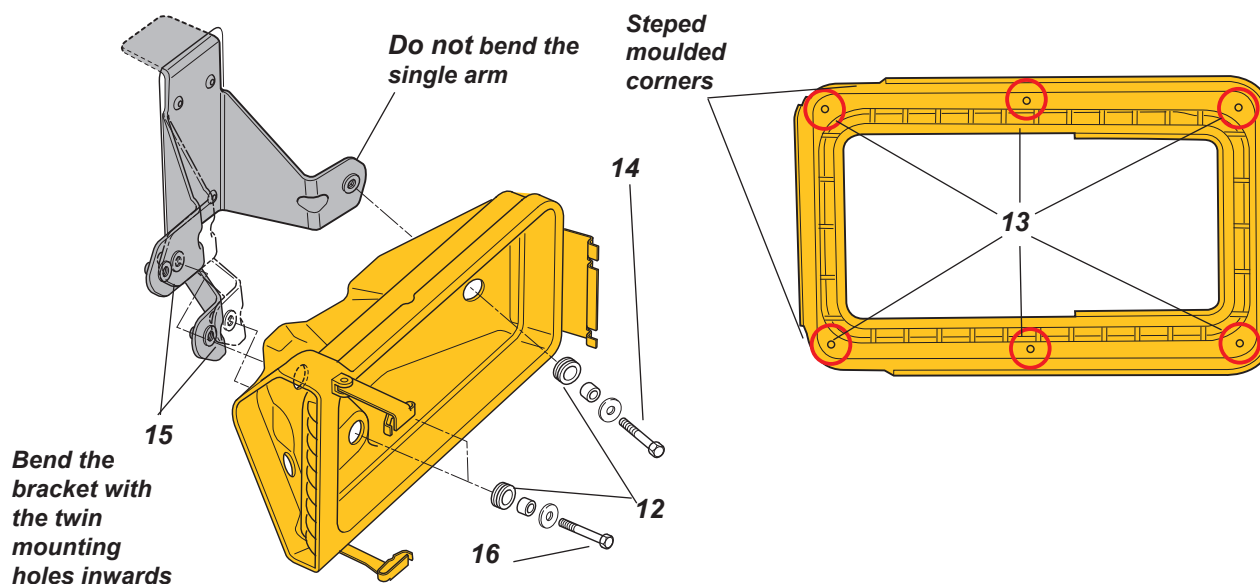
- Fit the 3 mounting rubbers and steel inserts to the new air filter base, arrowed. Disregard the 4th hole.
- Taking the new air filter adapter. Remove the 6 plastic tabs (circled) with a knife to allow the air filter to sit properly.

Airbox Installation

- Using one of the 3 retained fixing bolts, attach the new air filter base to the bracket on the single fixing hole nearest the engine.
- Bend the remaining arms of the bracket until the other 2 fixing holes line up with the air filter base. Ensure the mounting rubbers are not overly stressed when bolted up.

Note: To ensure that the intake hose will still reach between the airfilter casing and throttle body once refitted, it is important that single mounting point on the air filter bracket remains in its original position.

- Fit the remaining 2 fixing bolts and torque all 3 fixings to 12Nm (9 lb/ft)
- Fit the new air filter element into the new air filter base. The air filter element is fitted with the deep side into the base.
- Fit the air filter adapter onto the air filter element. The side which had the tabs were removed goes against the air filter. The 2 moulded corners (arrowed) on the adapter should be positioned towards the large 'triangular' air entry end of the air filter base.
- Clip the original air filter lid onto the new assembled air filter base. Ensure the air filter lid is properly located into the large clip, (arrowed). The small clips fit by pushing the 'sprung' end



over the air filter lid locating tabs until they locate into the groove in the clip. The clip on the top moves out towards the outer side of the vehicle, the bottom one moves in towards the engine compartment.

- Refit the zip-tube to the air filter lid and the throttle body. Tighten the 2 hose clips.
- Reconnect the MAF sensor and VSV plugs.
- Check the air filter housing and surrounding area to ensure that there are no trapped wires, pipes or areas where the air filter housing can chafe on the bodywork.

